



CREATIVE SOLUTIONS THAT SET THE STANDARD.



AUDIO VIDEO METALS

AVM is a designer and manufacturer of high quality metal racks and rack equipment for the audio and video production and distribution industry. Automated CNC machinery allows for close manufacturing tolerances, ensuring that accessories and components fit and are interchangeable.

AVM products are locally manufactured in Aurora, Ontario, Canada.
AVM is a unit of VE Group.



Quality Statement

At AVM, our objective is to provide quality products and service that consistently exceeds customer requirements and expectations. To meet these objectives, AVM is a strong believer in the continuous improvement process and has empowered its staff to be on constant watch for ways to do things faster, better and at a lower costs. In addition to our continuous improvement programs, AVM also has extensive inspection and quality assurance processes to insure that our customers get the best product possible. The results of our efforts are that AVM produces some of the best products in the industry and has many satisfied customers.

Customer Service and Returns

AVM prides itself on the quality of our customer service. From our professional design team to our sales, logistics and customer service group, our prime objective is to make your buying experience enjoyable.

We have spent long hours designing and testing our product packaging to make sure that your product arrives in showroom condition and if it doesn't just give us a call and we'll be happy to replace it at no charge.

If you experience problems with your equipment after delivery please call our customer service group or salesperson to discuss your problems and obtain an RMA number if warranted.

TABLE OF CONTENTS

METAL RACKS / ENCLOSURES	1 - 8
WOOD RACKS / ENCLOSURES	9 - 10
SHELVES	11 - 14
SLIDING SHELVES / DRAWERS	15 - 17
PANELS	18 - 24
ACCESSORIES / HARDWARE	25 - 27



WELDED RACK

The welded series rack is a fully welded constructed rack with adjustable front and rear rack rail. It has a vented top with rear electrical knockouts and open base for easy cable entry. Available in two depths of 20" & 25".

APPLICATION

Used when a rugged stand alone enclosed instrument rack is required.

FEATURES

- 20" & 25" depth.
- Adjustable front and rear 10 - 32 tapped rack rail.
- Large cable entry in base.
- Electrical knock outs at rear, vented front.
- 16 ga. CRS black powder coat.
- Leveling ft.

OPTIONS

- Front & rear locking door available in solid 9210 series plexiglass 9211 series or vented perforated 9212 series.
- Choice of four top inserts (solid, vented, 2 fan, 4 fan).
- Casters (9200 - 25, 9200 - 30, 9200 - 35)
- Caster skirt (9200) for 25" depth (9201) for 20" depth.
- Available in seven sizes.

CODE	DEPTH	RACK SPACE	HEIGHT	WIDTH	WEIGHT (LBS)	MATERIAL	FINISH
9220W - 14 20"		14	28.50"	22.25"	57	16 ga. CRS	black powder coat
9220W - 18 20"		18	35.50"	22.25"	62	16 ga. CRS	black powder coat
9220W - 21 20"		21	40.75"	22.25"	69	16 ga. CRS	black powder coat
9220W - 27 20"		27	51.25"	22.25"	76	16 ga. CRS	black powder coat
9220W - 37 20"		37	68.75"	22.25"	88	16 ga. CRS	black powder coat
9220W - 40 20"		40	74.00"	22.25"	100	16 ga. CRS	black powder coat
9220W - 44 20"		44	81.00"	22.25"	106	16 ga. CRS	black powder coat
9225W - 14 25"		14	28.50"	22.25"	62	16 ga. CRS	black powder coat
9225W - 18 25"		18	35.50"	22.25"	68	16 ga. CRS	black powder coat
9225W - 21 25"		21	40.75"	22.25"	76	16 ga. CRS	black powder coat
9225W - 27 25"		27	51.25"	22.25"	85	16 ga. CRS	black powder coat
9225W - 37 25"		37	68.75"	22.25"	100	16 ga. CRS	black powder coat
9225W - 40 25"		40	74.00"	22.25"	112	16 ga. CRS	black powder coat
9225W - 44 25"		44	81.00"	22.25"	120	16 ga. CRS	black powder coat

Optional tops fit 9220W & 9225W racks.



9800



9801



9802



9804

CASTER SKIRT

The Caster skirt is an attractive solution to conceal our heavy duty casters.

APPLICATION

Fits on our 9225W, 9220W & 9215 series racks with four 3 1/2" heavy duty nonlocking casters. (9200 - 35)

FEATURES

- 16 ga. CRS with black powder coat finish.
- 4 heavy duty 3 1/2" non locking casters (9200 - 35).
- All fastening hardware included.

CODE	HEIGHT	WIDTH	DEPTH	WEIGHT (LBS)	MATERIAL	FINISH
9200	4.25"	22.25"	25.00"	24	16 ga. CRS	black powder coat
9201	4.25"	22.25"	20.00"	21	16 ga. CRS	black powder coat
9202	4.25"	19.00"	19.00"	20	16 ga. CRS	black powder coat



LOCKING DOOR

Locking door secures welded and gangable racks from unwanted tampering.

APPLICATION

Attaches to any AVM welded or gangable rack front or back, left or right open.

FEATURES

- 16 ga. steel black powder coat.
- Locking latch.
- Available in 7 sizes.
- Available in solid (9210), plexiglass (9211) and perforated vented (9212).

CODE	RACK SPACE	HEIGHT	WIDTH	WEIGHT (LBS)	MATERIAL	FINISH
9210 - 14	14	25.25"	19.125"	9.5	16 ga. CRS	black powder coat
9210 - 18	18	32.25"	19.125"	12	16 ga. CRS	black powder coat
9210 - 21	21	37.50"	19.125"	14	16 ga. CRS	black powder coat
9210 - 27	27	48.00"	19.125"	18	16 ga. CRS	black powder coat
9210 - 37	37	65.50"	19.125"	24	16 ga. CRS	black powder coat
9210 - 40	40	70.75"	19.125"	26.5	16 ga. CRS	black powder coat
9210 - 44	44	77.75"	19.125"	29	16 ga. CRS	black powder coat
9211 - 14	14	25.25"	19.125"	9.5	16 ga. CRS	plexi glass
9211 - 18	18	32.25"	19.125"	12	16 ga. CRS	plexi glass
9211 - 21	21	37.50"	19.125"	14	16 ga. CRS	plexi glass
9211 - 27	27	48.00"	19.125"	18	16 ga. CRS	plexi glass
9211 - 37	37	65.50"	19.125"	24	16 ga. CRS	plexi glass
9211 - 40	40	70.75"	19.125"	26.5	16 ga. CRS	plexi glass
9211 - 44	44	77.75"	19.125"	29	16 ga. CRS	plexi glass
9212 - 14	14	25.25"	19.125"	9.5	16 ga. CRS	perforated
9212 - 18	18	32.25"	19.125"	12	16 ga. CRS	perforated
9212 - 21	21	37.50"	19.125"	14	16 ga. CRS	perforated
9212 - 27	27	48.00"	19.125"	18	16 ga. CRS	perforated
9212 - 37	37	65.50"	19.125"	24	16 ga. CRS	perforated
9212 - 40	40	70.75"	19.125"	26.5	16 ga. CRS	perforated
9212 - 44	44	77.75"	19.125"	29	16 ga. CRS	perforated





GANGABLE RACKS

Fully welded constructed gangable racks offer abundant cable access through either opened top or bottom. Features fully adjustable front and rear 10 - 32 tapped rack rail, plus electrical knock out at rear and slotted vents at front.

APPLICATION

When two or more racks are ganged together.

FEATURES

- 16 ga. CRS black powder coat.
- Open top and bottom.
- Electrical knockouts in rear.
- Vented front.
- 25" and 36" depth.

Available in 8 sizes.

CODE	DEPTH	RACK SPACE	HEIGHT	WIDTH	WEIGHT (LBS)	MATERIAL	FINISH
9225G - 14	25"	14	28.50"	22.25"	23	16 ga. CRS	black powder coat
9225G - 18	25"	18	35.50"	22.25"	26	16 ga. CRS	black powder coat
9225G - 21	25"	21	40.75"	22.25"	28	16 ga. CRS	black powder coat
9225G - 27	25"	27	51.25"	22.25"	31.5	16 ga. CRS	black powder coat
9225G - 37	25"	37	68.75"	22.25"	37.5	16 ga. CRS	black powder coat
9225T - 40	25"	40	74.00"	22.25"	39.5	16 ga. CRS	black powder coat
9225G - 44	25"	44	81.00"	22.25"	42	16 ga. CRS	black powder coat
9236G - 44	36"	44	81.00"	22.25"	56	14 ga. CRS	black powder coat

OPTIONS

- Front and rear locking door available in solid 9210 series plexiglass, 9211 series or vented perforated 9212 series.
- Choice of four top inserts (solid, vented, two fan, four fan).

Optional tops fit 9225G and 9236G racks.



9800



9801



9802



9804

WOOD SIDE PANELS

Made from black high density particle board. Attaches to the sides of any AVM Gangable or Frame rack to obtain an attractive aesthetic finish.

APPLICATION

When an enclosed rack is preferred.

FEATURES

- 3/4" black high density particle board.
- Hardware included.
- Easily attaches to rack with slip bracket.
- 9202 series - 19" deep for frame racks.
- 9203 series - 25" deep for gangable racks.

Available in 7 sizes, 2 depths 19" + 25".

CODE	RACK SPACES	HEIGHT	DEPTH	MATERIAL
9202 - 8	8	17.75"	19"	3/4" black high density particale board
9202 - 14	14	28.25"	19"	3/4" black high density particale board
9202 - 21	21	40.25"	19"	3/4" black high density particale board
9202 - 27	27	51.00"	19"	3/4" black high density particale board
9202 - 37	37	68.50"	19"	3/4" black high density particale board
9202 - 40	40	73.75"	19"	3/4" black high density particale board
9202 - 42	42	77.00"	19"	3/4" black high density particale board
9203 - 14	14	28.50"	25"	3/4" black high density particale board
9203 - 18	18	35.50"	25"	3/4" black high density particale board
9203 - 21	21	40.75"	25"	3/4" black high density particale board
9203 - 27	27	51.25"	25"	3/4" black high density particale board
9203 - 37	37	68.75"	25"	3/4" black high density particale board
9203 - 40	40	74.00"	25"	3/4" black high density particale board
9203 - 44	44	81.00"	25"	3/4" black high density particale board



STEEL SIDE PANELS

These rugged panels quickly enclose and enhance AVMs gangable or frame racks. Panels conveniently slip on the side of rack and secures from the inside for added security.

APPLICATION

When an enclosed rack is preferred.

FEATURES

- 16 ga. steel black powder coat finish.
- Hardware included.
- Easily attaches to rack with slip bracket.
- 9204 series 19" deep for frame racks.
- 9205 series 25" deep for gangable racks.
- 9206 series 36" deep for gangable racks.

Available in 7 sizes.

Three depths 19", 25" & 36".

CODE	RACK SPACES	HEIGHT	DEPTH	MATERIAL	FINISH
9204 - 8	8	17.75"	19"	16 ga. CRS	black powder coat
9204 - 14	14	28.25"	19"	16 ga. CRS	black powder coat
9204 - 21	21	40.25"	19"	16 ga. CRS	black powder coat
9204 - 27	27	51.00"	19"	16 ga. CRS	black powder coat
9204 - 37	37	68.50"	19"	16 ga. CRS	black powder coat
9204 - 40	40	73.75"	19"	16 ga. CRS	black powder coat
9204 - 42	42	77.00"	19"	16 ga. CRS	black powder coat
9205 - 14	14	28.50"	25"	16 ga. CRS	black powder coat
9205 - 18	18	35.50"	25"	16 ga. CRS	black powder coat
9205 - 21	21	38.75"	25"	16 ga. CRS	black powder coat
9205 - 27	27	51.25"	25"	16 ga. CRS	black powder coat
9205 - 37	37	68.75"	25"	16 ga. CRS	black powder coat
9205 - 40	40	74.00"	25"	16 ga. CRS	black powder coat
9205 - 44	44	81.00"	25"	16 ga. CRS	black powder coat
9206 - 44	44	81.00"	36"	16 ga. CRS	black powder coat



FRAME RACKS

Kit style frame racks ship flat and assemble in minutes.

APPLICATION

Great for in wall installation or when space is limited and a narrow rack is required.

FEATURES

- 11 ga. 10 - 32 tapped rack rail.
- 14 ga. steel black powder coated top and bottom.
- Can be ganged together.
- Vented front.
- Electrical knocks outs at rear.
- 7 sizes to choose from.

OPTIONS

- Casters.
- Caster/swivel base.
- Side panels metal or wood.

CODE	RACK SPACES	HEIGHT	WIDTH	DEPTH	WEIGHT (LBS)	FINISH	MATERIAL
9215 - 8	8	17.75"	19.25"	19"	29	14 ga. CRS	black powder coat
9215 - 14	14	28.25"	19.25"	19"	32	14 ga. CRS	black powder coat
9215 - 21	21	40.25"	19.25"	19"	35.5	14 ga. CRS	black powder coat
9215 - 27	27	51.00"	19.25"	19"	38.5	14 ga. CRS	black powder coat
9215 - 37	37	68.50"	19.25"	19"	43.5	14 ga. CRS	black powder coat
9215 - 40	40	73.75"	19.25"	19"	45	14 ga. CRS	black powder coat
9215 - 42	42	77.00"	19.25"	19"	47	14 ga. CRS	black powder coat



Shown with a 9215 rack

CASTER / SWIVEL BASE

Allows frame racks to easily roll out and swivel for easy access to back of rack.

APPLICATION

When rear servicing of in wall rack is required.

FEATURES

- 16 ga. steel with black powder coat.
- 2" rigid casters.
- 750 lbs. Capacity swivel base.
- All hardware included.

CODE	HEIGHT	WIDTH	DEPTH	WEIGHT (LBS)	MATERIAL	FINISH
9216	3.00"	19"	20.00"	18	16 ga. CRS	black powder coat

RACK POD TRANSPORTABLE RACK

APPLICATION

Designed to be shipped fully-loaded and pre-tested. Ready for on-site hook-up to create any size of equipment room needed.

FEATURES

- Angle braces for added strength and stability
- Front and rear adjustable rack rails
- Upper corner eye bolts for anchor points during shipping and for earthquake spec compliance
- Grounding lugs
- Bottom travel covers to protect cables during movement
- Aluminum and steel base skid with space for pump truck forks and cables

OPTIONS

- 6' Plugmold multi-outlet strips with IG receptacles
- 1/4" aluminum lacing bars
- Front and rear doors, left or right opening
- Removable side panels
- Cooling fan array top plates



CODE	HEIGHT	WIDTH	DEPTH	WEIGHT	FINISH
9272	88.500"	52"	44"	300 lbs.	black powder coat
9274	88.500"	96"	44"	570 lbs.	black powder coat



OPTIONAL

- 9240 - 12P Plexiglass door
- 9240 - 12S Steel door
- 9240 - 12C 14 ga. CRS Cradle
- 9240K Key lock for door or side panel



OPTIONS

Rear rack rail

METAL HANGING RACK

An attractive and versatile wall rack that compliments any system.

APPLICATION

The fully welded 9240 19" wall rack mounts directly through 16" centered rear panel mount holes or when used with our optional cradle the 9240 can be preloaded and tested off site and when ready it mounts to the pre installed cradle onsite. Cable connections are then easily accessed through the removable side panels. An optional plexiglass or steel door is available as well as locks for doors and side panels adding total security.

FEATURES

- Standard 19" rack opening.
- Top panel fan knock out.
- 16 ga. CRS black powder coat.
- Fixed front and rear captive nut rack rail.
- Top and bottom knock out plate.
- 300 mm. square rear knock out.
- 12 rack space.
- Optional plexiglass or solid steel front locking door.
- 50 captive nuts included.
- 19.75" depth.
- Removable side panels with optional lock available.
- Rear panel mounting holes 16" on center.
- Optional 14 ga. CRS Cradle.

An economical solution to cost sensitive systems. Easily mounts on preinstalled back pan.

APPLICATION

With three sizes to choose from our 19" econo wall rack fits most applications. The 1" deep locking door adds more distance to the overall depth allowing for greater storage capacity. Constructed from 18 ga. CRS this fully welded construction is finished with a durable black powder coat.

FEATURES

- 18 ga. CRS black powder coat.
- Large rear cable access.
- Rear back pan with 16" on center mounting holes.
- Adjustable 10 - 32 tapped front rack rail.
- Numerous cable tie points.
- Three sizes 8, 14 & 20 space.
- Top and bottom electrical knock outs.
- Vented sides/fan ports.

CODE	RACK SPACES	HEIGHT	WIDTH	DEPTH	MATERIAL	FINISH
9242 - 8	8	15.25	20.50	19	18 ga. CRS	black powder coat
9242 - 14	14	25.75	20.50	19	18 ga. CRS	black powder coat
9242 - 20	20	36.25	20.50	19	18 ga. CRS	black powder coat

DESK TOP RACKS

Our most economical rack offers quick assembly and functional styling.

APPLICATION

Great for test or processing equipment or whenever a desk top rack is required.

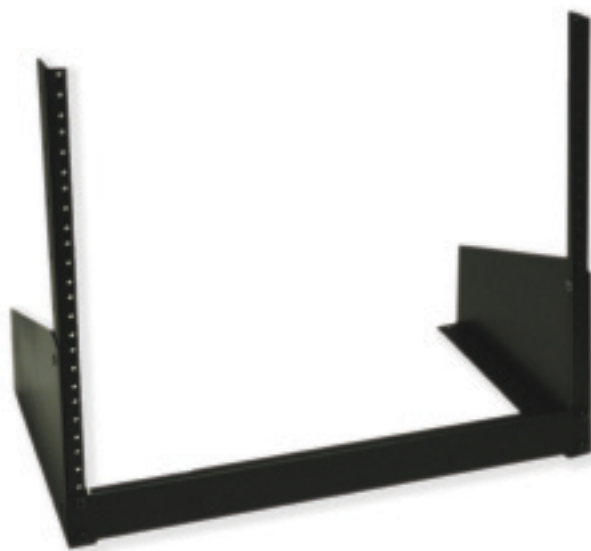
FEATURES

- 16 ga. steel black powder coat.
- Quick assembly.
- Hardware included.
- Available in two sizes 8 space, 12 space.
- Slight front angle for optimal viewing.

Please order:

9160 - 8, 8 spaces

9160 - 12, 12 spaces



CABLE TROUGH

Conveniently conceals cables. Quick access is easy with a slam latch door.

APPLICATION

Organizes high density cable clusters.

FEATURES

- 16 ga. steel black powder coat finish.
- Seven sizes to choose from.
- Hinged door with 2 slam latches.
- Available in 7 sizes.



CODE	RACK SPACE	HEIGHT	MATERIAL	FINISH
9230 - 14	14	24.50"	16 ga. CRS	black powder coat
9230 - 18	18	31.50"	16 ga. CRS	black powder coat
9230 - 21	21	36.75"	16 ga. CRS	black powder coat
9230 - 27	27	47.25"	16 ga. CRS	black powder coat
9230 - 37	37	64.75"	16 ga. CRS	black powder coat
9230 - 40	40	70.00"	16 ga. CRS	black powder coat
9230 - 44	44	77.00"	16 ga. CRS	black powder coat



SLANT RACK

The slant rack provides easy access and visibility to equipment.

FEATURES

- Provides 14 rack spaces angled at 25 degrees.
- Manufactured from 3/4" high density black or maple particle board.
- Units ship flat. (Assembly is required)
- Options include:
 - casters
 - rear rack rail

CODE	HEIGHT	WIDTH	DEPTH	MATERIAL
S2900	31.00"	20.50"	16"	5/8" black high density particle board
S2901	31.00"	20.50"	16"	3/4" maple high density particle board



COMBINATION RACK

The combination rack combines the features of a slant rack and vertical rack for terrific versatility. 12 slant spaces and 12 vertical spaces.

FEATURES

- Ideal for rack mounting mixers and power amps into one unit.
- Slanted top provides 12 rack spaces angles at 35 degrees; bottom provides 12 vertical rack spaces.
- Manufactured from 3/4" black or maple high density particle board.
- Units ship flat. (Assembly is required)
- Options include:
 - casters
 - rear rack rail

CODE	HEIGHT	WIDTH	DEPTH	MATERIAL
S2910	44.50"	20.50"	20.00"	3/4" black high density particle board
S2911	44.50"	20.50"	20.00"	3/4" maple high density particle board

VERTICAL RACKS

High quality laminated vertical racks are an excellent choice for studios that require economical storage systems.

FEATURES

- Available in 4 sizes.
- 18" depth.
- Manufactured from 3/4" high density black particle board.
- Units ship flat. (Assembly is required)
- Options include:
 - casters
 - rear rack rail

CODE	RACK SPACES	HEIGHT	WIDTH	DEPTH	MATERIAL
S1808	8	15.312"	20.50"	18"	3/4" black high density particle board
S1812	12	22.312"	20.50"	18"	3/4" black high density particle board
S1816	16	29.312"	20.50"	18"	3/4" black high density particle board
S1820	20	36.312"	20.50"	18"	3/4" black high density particle board



PRE-ASSEMBLED RACKS

Deluxe series vertical racks shipped assembled and available in black or maple.

FEATURES

- Available in 3 sizes
- Available in 2 colours
- Pre assembled
- Rack Rail front and rear
- Premium casters
- Large tabletop access vent
- Locking tinted acrylic front door
- Locking rear door with fan cut out

CODE	RACK SPACES	HEIGHT	WIDTH	DEPTH	MATERIAL
S2012B	12	27"	23"	27"	High density particle board
S2012M	12	27"	23"	27"	High density particle board
S2016B	16	34"	23"	27"	High density particle board
S2016M	16	34"	23"	27"	High density particle board
S2021B	21	43"	23"	27"	High density particle board
S2021M	21	43"	23"	27"	High density particle board (available in black & maple)





VENTED SHELF

Vented Shelves have ventilation slots to improve air circulation in the rack and are available in 7 sizes.

APPLICATION

Rack mounting of equipment requiring maximum cooling.

FEATURES

- 16 ga. CRS with black powder coat finish.
- One piece construction.
- Slotted holes provide freedom of air passage to equipment and accessibility of back stop clamp #9137.
- Available in 7 sizes to fit one to 5 rack spaces.
- Slotted side holes for part #9135 hold down bracket.



CODE	RACK SPACES	HEIGHT	TOTAL WIDTH	SHELF WIDTH	DEPTH	WEIGHT (LBS)	WEIGHT CAPACITY	FINISH	MATERIAL
9031 - 1	1	1.75"	19"	17.38"	11"	4.6	35 lbs.	black powder coat	16 ga. CRS
9031 - 2	2	3.50"	19"	17.38"	11"	5.3	50 lbs.	black powder coat	16 ga. CRS
9031 - 2D	2	3.50"	19"	17.38"	14.75"	5.3	50 lbs.	black powder coat	16 ga. CRS
9031 - 3	3	5.25"	19"	17.38"	14.75"	8.0	75 lbs.	black powder coat	16 ga. CRS
9031 - 4	4	7.00"	19"	17.38"	14.75"	10.0	90 lbs.	black powder coat	16 ga. CRS
9031 - 5	5	8.75"	19"	17.38"	16"	10.70	90 lbs.	black powder coat	16 ga. CRS
9031-3D	3	5.25"	19"	17.38"	18"	7.00	75lbs.	black powder coat	16 ga. CRS

EXTENDABLE SHELVES

Two, three and four space shelves with rear extensions.

APPLICATION

For heavy duty application. Rear extensions increase weight load.

FEATURES

- 16 ga. steel black powder coat
- Available in 4 sizes: 1 space, 2 space, 3 space, 4 space.
- 22 1/4 depth.
- Rear extension adjust from 22 1/4" - 30"
- Vented bottom and sides.



CODE	RACK SPACE	HEIGHT	DEPTH	TOTAL WIDTH	SHELF WIDTH	WEIGHT CAPACITY	MATERIAL	FINISH
9032 - 1	1	1.75"	22.25"	19"	17.38"	100 lbs.	16 ga. CRS	black powder coat
9032 - 2	2	3.50"	22.25"	19"	17.38"	350 lbs.	16 ga. CRS	black powder coat
9032 - 3	3	5.25"	22.25"	19"	17.38"	350 lbs.	16 ga. CRS	black powder coat
9032 - 4	4	7.00"	22.25"	19"	17.38"	350 lbs.	16 ga. CRS	black powder coat

TELESCOPIC PANEL

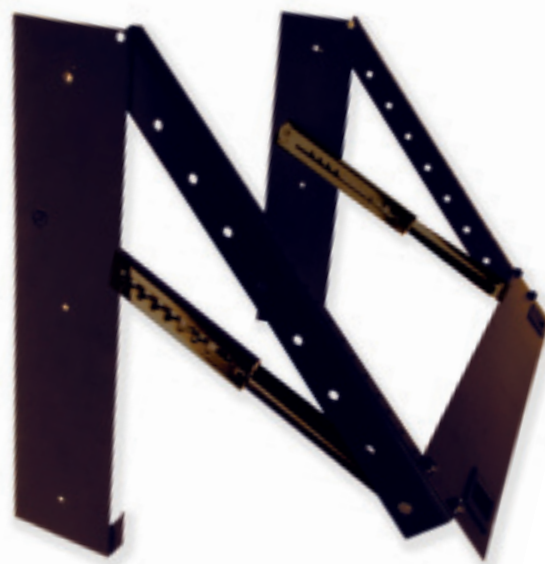
The telescopic panel locks secure in its home position with two spring loaded latches. When needed this unit extends to 10 different positions for optimal use. Available in 8 space and 12 space.

APPLICATION

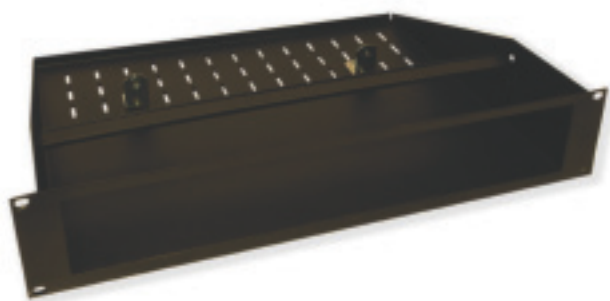
Audio mixers, or any other equipment, where varied operating angles are desired.

FEATURES

- 16 ga. CRS with black powder coat finish.
- Two flush - mount spring - loaded latches to prevent unit from extending.
- 10 different positions.
- Two pre - mounted ratchet stays.
- Available in two sizes 8 space (9141 - 8) and 12 space (9141 - 12) assembly required.
- 8 space requires an opening of 17.500"
- 12 space requires an opening of 24.500"



CODE	HEIGHT	WIDTH	MATERIAL	FINISH
9141 - 8	17.00"	19.25"	16 ga. CRS	black powder coat
9141 - 12	24.00"	19.25"	16 ga. CRS	black powder coat



Shown with 9135 hold down clamp 9137 stops.

CUSTOM PANEL / SHELF

The custom panel/shelf is available in eight sizes to fit two to nine rack spaces. The front panel is custom fabricated to fit your unit. Send us the measurements (A, B, C & D) of your unit and we will ship within 48 hours.

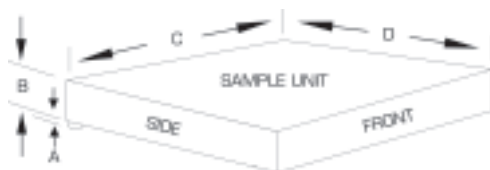
APPLICATION

Custom rack mounting of non rackable equipment.

FEATURES

- Shelf - 16 ga. Steel with black powder coat finish.
- Front panel - 14 ga. steel black baked textured enamel.
- Available in 4 sizes to fit two to 5 rack spaces.
- Easy installation.
- Will ship within 48 hours from receipt of order.
- Call or fax measurements A, B, C and D (See diagram for details).
- 9135 hold down clamp and 9137 stops are recommended to fully secure your equipment (sold separately).

CODE	RACK SPACES	HEIGHT	PANEL WIDTH	SHELF WIDTH	DEPTH	WEIGHT (LBS)	PANEL FINISH
9039 - 2	2	3.50"	19"	17.38"	14.75"	4.9	black textured enamel
9039 - 3	3	5.25"	19"	17.38"	14.75"	6.1	black textured enamel
9039 - 4	4	7.00"	19"	17.38"	14.75"	8.6	black textured enamel
9039 - 5	5	8.75"	19"	17.38"	16"	11.9	black textured enamel



CALL OR FAX WITH MEASUREMENTS OF YOUR UNIT:

A = Bottom of face plate to bottom of shelf

B = Height of face plate

C = Width of unit

D = Depth of unit

HOLD DOWN CLAMP

The 9135 Hold Down Clamp mounts easily to any of AVM's shelves and prevents equipment from lifting out of the shelf when in transit

APPLICATIONS

Used to hold down tape decks, CD players, VCRs, or any other non - rack - mountable equipment to shelf

FEATURES

- Mounts to any AVM shelf.
- Prevents equipment from lifting out of shelf.
- Made from heavy duty 16 ga. CRS.
- Plastic edging protects equipment.
- Threaded studs for easily assembly.
- Tough black baked textured enamel finish.
- One size fits all shelves.
- Hardware included.



STOPS

The 9137 stop prevents equipment from shifting when in transit. It fits all vented shelves.

APPLICATION

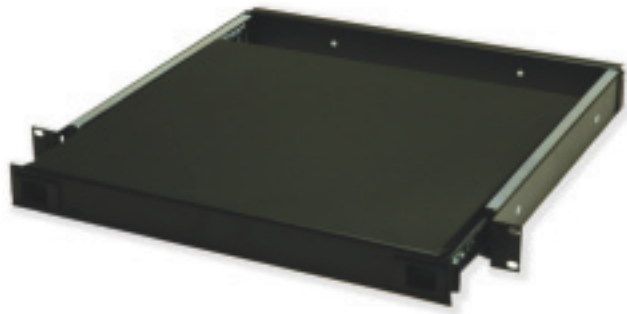
Used with 9039 series custom/panel shelf.

FEATURES

- Zinc plated 16 ga. CRS.
- Hardware included.



CODE	DESCRIPTION	HEIGHT	DEPTH	LENGTH	WEIGHT (LBS)	FINISH	MATERIAL
9135	hold down clamp	1.00"	1.00"	15.0"	.80	black baked enamel	16 ga. CRS
9137	stop	1.50"	.50"	1.50"	.03	zinc	16 ga. CRS



SLIDING SHELF

The sliding shelf features high quality ball bearing slides, two latches to prevent shelf from extending at unwanted times. 50 pound weight capacity and fits in one rack space.

APPLICATION

Turntables, drum machines, mounting of items not equipped with rack ears.

FEATURES

- 16 ga. CRS with durable black powder coat finish.
- 100 lbs. Weight capacity.
- Two flush - mount, spring - loaded latches prevent unit from extending. Order 9040 w/o latch.
- Full 14" extension.
- Ball bearing drawer slides with release mechanism.
- Fits into one rack space.
- Telescopic support mounts to side of rack.
- The 9041 shelf can also be used as a 'one space' drawer (no lid available).

CODE	DESCRIPTION	RACK SPACES	HEIGHT	TOTAL WIDTH	SHELF WIDTH	DEPTH	WEIGHT (LBS)	FINISH	MATERIAL
9040	Sliding shelf	1	1.75"	19"	17.44"	14.63"	7.3	black powder coat	16 ga. CRS
9041	Sliding shelf	1	1.75"	19"	17.44"	14.63"	7.3	black powder coat	16 ga. CRS

DEEP SLIDING SHELF

The deep sliding shelf offers greater depth plus all of the same features as the 9041 sliding shelf: high quality ball bearing slides, two latches to prevent shelf from extending at unwanted times, and 100 pound weight capacity.

APPLICATIONS

VCR's, BETA CAMS, monitors, mounting of deeper and heavier items not equipped with rack ears.

FEATURES

- 16 ga. CRS with durable black powder coat finish.
- 100 lbs. weight capacity.
- Two flush - mount, spring - loaded latches prevent unit from extending.
- Full 20" extension.
- Ball bearing drawer slides with release mechanism.
- Fits into one rack space.
- Telescopic support mounts to rear rack rail.
- The 9042 shelf can also be used as a 'one space' drawer (no lid available).



Shown as a 1 space drawer.

CODE	DESCRIPTION	RACK SPACES	HEIGHT	TOTAL WIDTH	SHELF WIDTH	DEPTH	WEIGHT (LBS)	FINISH	MATERIAL
9042	deep sliding shelf	1	1.75"	19"	17.44"	24.00"	13	black powder coat	16 ga. CRS

SLIDING DRAWERS

Sliding drawers are available in four sizes and feature high quality ball bearing slides, a slam latch to prevent drawer from opening at unwanted times, a fully enclosed top to keep contents in and debris out.

APPLICATIONS

Storage of accessories, cassette tapes, CDs, cords, tools, etc.

FEATURES

- Four sizes to fit two, three, four or five rack spaces.
- 18 ga. CRS chassis with black powder coat finish.
- 14 ga. CRS panels: steel with black powder coat finish.
- Flush - mount, spring - loaded latch prevents drawer from opening at unwanted times.
- Drawer extends a full 14 inches for easy access.
- Ball bearing drawer slides with release mechanism.
- Key lock available on request: just specify suffix LK when ordering e.g. 9052 - 2LK



CODE	RACK SPACES	HEIGHT	TOTAL WIDTH	DRAWER WIDTH	DEPTH	WEIGHT (LBS)	FINISH	MATERIAL
9052 - 2	2	3.50"	19"	17"	15.25"	14.45	black powder coat	18 ga. CRS
9052 - 3	3	5.25"	19"	17"	15.25"	16.35	black powder coat	18 ga. CRS
9052 - 4	4	7.00"	19"	17"	15.25"	18.25	black powder coat	18 ga. CRS
9052 - 5	5	8.75"	19"	17"	15.25"	20.15	black powder coat	18 ga. CRS

EXTENDABLE DRAWER

A modified version of our 9052 series drawers. Drawers have extendable rear support brackets to carry added weight loads.

APPLICATION

Use when heavier weight capabilities are required.

FEATURES

- 16 ga. CRS black powder coat extensions.
- Adjustable from 15.250" to 18.500"
- Attaches to front and rear rack rail.
- 4 sizes to choose from.

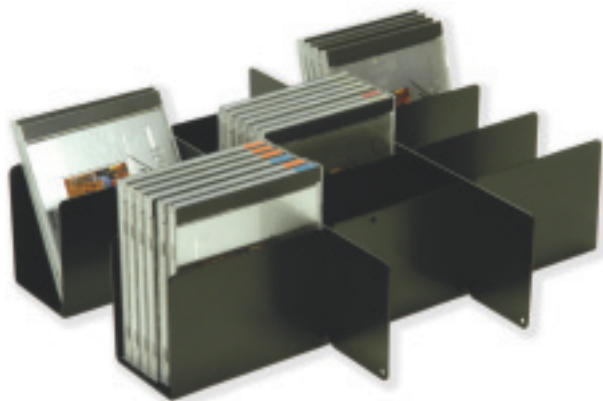
Note: Extendable support bracket also sold separately and can be attached to all AVM drawers.



Please order for brackets only:

- 9052 - 2 BRK for 2 space.
- 9052 - 3 BRK for 3 space.
- 9052 - 4 BRK for 4 space.
- 9052 - 5 BRK for 5 space.

CODE	RACK SPACES	HEIGHT	TOTAL WIDTH	DRAWER WIDTH	DEPTH	WEIGHT (LBS)	FINISH	MATERIAL
9052 - 2D	2	3.50"	19"	17"	15.25"	15.30	black powder coat	18 ga. CRS
9052 - 3D	3	5.25"	19"	17"	15.25"	17.95	black powder coat	18 ga. CRS
9052 - 4D	4	7.00"	19"	17"	15.25"	19.85	black powder coat	18 ga. CRS
9052 - 5D	5	8.75"	19"	17"	15.25"	22.40	black powder coat	18 ga. CRS



CD DIVIDERS

Fits in the 9052 - 4. Four space drawer to hold CD's or as storage for any small parts.

APPLICATION

Storage of CD's or miscellaneous parts.

FEATURES

- 16 ga. steel with black powder coat finish.
- Snaps together in seconds.
- Fits 4 space drawer (9052 - 4)

CODE	HEIGHT	WIDTH	DEPTH	MATERIAL	FINISH
9050	3.75"	15.875"	14.625"	16 ga. CRS	black powder coat



RACK MOUNTED CHASSIS

Rack mount chassis are constructed of 18 ga. steel with an aluminum front panel. The top and bottom panels are removable for easy access.

APPLICATION

Custom electronic projects.

FEATURES

- 18 ga. steel chassis with black powder coat.
- Available in eight configurations to fit one, two, three, or four rack spaces in 5" or 10" depth.
- 16 ga. aluminum removable front panel.
- Removable top and bottom for easy access.
- Chassis is 17" wide, by one, two, three or four rack space height (less 1/4") by 5" or 10" depth.

CODE	RACK SPACES	HEIGHT	PANEL WIDTH	CHASSIS WIDTH	DEPTH	WEIGHT (LBS)	MATERIAL
9071 - 5	1	1.75"	19"	17.00"	5"	6.0	18 ga. CRS
9071 - 10	1	1.75"	19"	17.00"	10"	6.5	18 ga. CRS
9072 - 5	2	3.5"	19"	17.00"	5"	7.0	18 ga. CRS
9072 - 10	2	3.5"	19"	17.00"	10"	7.5	18 ga. CRS
9073 - 5	3	5.25"	19"	17.00"	5"	8.0	18 ga. CRS
9073 - 10	3	5.25"	19"	17.00"	10"	8.5	18 ga. CRS
9074 - 5	4	7.00"	19"	17.00"	5"	9.0	18 ga. CRS
9074 - 10	4	7.00"	19"	17.00"	10"	9.5	18 ga. CRS

FLAT BLANK PANELS

9000 series flat blank panels offer an economical alternative for applications that do not require the added strength offered by a formed flange.

APPLICATION

Light duty or permanent installations.

FEATURES

- Economically priced.
- Completely flat / no formed edges.
- Made from 14 ga. CRS.
- Standard rack width (19").
- Sizes to fit up to 5 spaces.
- Professional black powder coat finish.

CODE	RACK SPACES	HEIGHT	WIDTH	WEIGHT (LBS)	FINISH	MATERIAL
9000 - 1	1	1.75"	19"	0.65	black powder coat	14 ga. CRS
9000 - 2	2	3.50"	19"	1.30	black powder coat	14 ga. CRS
9000 - 3	3	5.25"	19"	1.95	black powder coat	14 ga. CRS
9000 - 4	4	7.00"	19"	2.60	black powder coat	14 ga. CRS
9000 - 5	5	8.75"	19"	3.25	black powder coat	14 ga. CRS
9000 - 6	6	10.5"	19"	3.9	black powder coat	14 ga. CRS



FORMED BLANK RACK PANELS

Blank Rack Panels are available in five sizes to fit one to five rack spaces. They feature a 0.50" flange for additional strength and are available in your choice of steel 9001 or aluminum 9002.

CODE	RACK SPACES	HEIGHT	WIDTH	WEIGHT (LBS)	FINISH	MATERIAL
9001 - 1	1	1.75"	19"	0.80	black powder coat	16 ga. CRS
9001 - 2	2	3.50"	19"	1.40	black powder coat	16 ga. CRS
9001 - 3	3	5.25"	19"	2.10	black powder coat	16 ga. CRS
9001 - 4	4	7.00"	19"	2.80	black powder coat	16 ga. CRS
9001 - 5	5	8.75"	19"	3.50	black powder coat	16 ga. CRS
9001 - 6	6	10.5"	19"	4.2	black powder coat	16 ga. CRS
9002 - 1	1	1.75"	19"	0.24	black powder coat	aluminum
9002 - 2	2	3.50"	19"	0.48	black powder coat	aluminum
9002 - 3	3	5.25"	19"	0.72	black powder coat	aluminum
9002 - 4	4	7.00"	19"	0.95	black powder coat	aluminum
9002 - 5	5	8.75"	19"	1.19	black powder coat	aluminum
9002 - 6	6	10.5"	19"	1.43	black powder coat	aluminum

APPLICATIONS

Custom panels, patch bays or to fill empty spaces in a rack.

FEATURES

- Available in two styles:
 - 16 ga. aluminum
 - black powder coat finish, or 16 ga. CRS with black powder coat finish.
- Powder coat resists scratches (very roadworthy).
- Five sizes to fit one to five rack spaces.
- 1/2" flange on top and bottom for extra strength.



HORIZONTAL VENT PANELS

Horizontal vent panels are punched with horizontal slots to allow air to circulate in rack enclosures. They are made from 16 ga. CRS in sizes to fit one, two, or three rack spaces.

APPLICATION

Any rack enclosure in which heat buildup could be problem.
(i.e. power amp racks, etc.)

FEATURES

- Heavy duty 16 ga. CRS.
- 0.50" flange on top and bottom for extra strength.
- Available in three sizes to fit one, two and three rack spaces.
- Standard rack width (19").
- Professional black powder coat finish.

HORIZONTAL VENT PANELS / STEEL (9022 SERIES)

CODE	RACK SPACES	HEIGHT	WIDTH	WEIGHT (LBS)	MATERIAL
9022 - 1	1	1.75"	19"	0.63	16 ga. CRS
9022 - 2	2	3.50"	19"	1.10	16 ga. CRS
9022 - 3	3	5.25"	19"	1.47	16 ga. CRS

VERTICAL VENT PANELS

Vertical vent panels are punched with vertical slots to allow air to circulate in rack enclosures. They are available in 16 ga. CRS to fit one, two, or three rack spaces.

APPLICATION

Any rack enclosure in which heat buildup could be a problem.
(i.e. power amp racks, etc.)

FEATURES

- Available in heavy duty 16 ga. CRS.
- 0.50" flange on top and bottom for extra strength.
- Available in three sizes to fit one, two or three rack spaces.
- Standard rack width (19").
- Professional black powder coat finish.

VERTICAL VENT PANELS / STEEL (9023 SERIES)

CODE	RACK SPACES	HEIGHT	WIDTH	WEIGHT (LBS)	FINISH	MATERIAL
9023 - 1	1	1.75"	19"	0.60	black powder coat	16 ga. CRS
9023 - 2	2	1.75"	19"	1.00	black powder coat	16 ga. CRS
9023 - 3	3	1.75"	19"	1.35	black powder coat	16 ga. CRS

PERFORATED VENT PANELS

Perforated vent panels are punched with 0.062" holes to allow air to circulate in rack enclosures.

APPLICATION

Any rack enclosure in which heat buildup could be a problem.
(i.e. power amp racks, etc.)

FEATURES

- Helps prevent heat build up in the rack by allowing air to circulate.
- 16 ga. CRS with black powder coat finish.
- Available in four sizes to fit one, two, three, or four rack spaces.
- 1/2" flange on top and bottom for extra strength.
- Available with small perforations (1062" holes).

SMALL PERFORATIONS (9027 SERIES)

CODE	RACK SPACES	HEIGHT	TOTAL WIDTH	WEIGHT (LBS)	PERFORATION SIZE	MATERIAL	FINISH
9027 - 1	1	1.75"	19"	0.35	small (.062") holes	16 ga. CRS	black powder coat
9027 - 2	2	3.50"	19"	0.65	small (.062") holes	16 ga. CRS	black powder coat
9027 - 3	3	5.25"	19"	1.00	small (.062") holes	16 ga. CRS	black powder coat
9027 - 4	4	7.00"	19"	1.35	small (.062") holes	16 ga. CRS	black powder coat



SECURITY COVERS

Security covers deter access to equipment controls.
Settings remain visible while protected from annoying and dangerous tampering.

APPLICATION

Fit over equipment faceplates to prevent the changing of settings.
(i.e. volume, EQ, etc.)

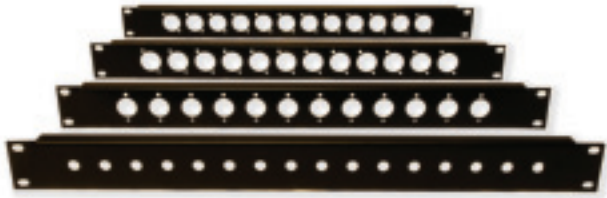
FEATURES

- Made from heavy duty 18 ga. perforated CRS.
- Available with small perforation (1/16" holes).
- Settings remain visible while equipment is protected from unauthorized tampering.
- Notching at opposite corners allows cover to be installed or removed while equipment remains fastened with two bolts.
- Neoprene edging protects equipment from scratches.
- One - piece construction for maximum strength.
- Tough, black powder coat finish handles abuse.
- Available in sizes to fit one, two, three or four rack spaces.

SMALL PERFORATIONS (9025 SERIES)

CODE	RACK SPACES	HEIGHT	TOTAL WIDTH	DEPTH	WEIGHT (LBS)	PERFORATION SIZE	MATERIAL	FINISH
9025 - 1	1	1.75"	19"	1.00"	0.40	small (1062") holes	18 ga. CRS	black enamel
9025 - 2	2	3.50"	19"	1.00"	0.70	small (1062") holes	18 ga. CRS	black enamel
9025 - 3	3	5.25"	19"	1.00"	1.05	small (1062") holes	18 ga. CRS	black enamel
9025 - 4	4	7.00"	19"	1.00"	1.40	small (1062") holes	18 ga. CRS	black enamel





JACK PANELS

Standard prepunched jack panels with black powder coated finish available in four configurations: sixteen 1/4" jacks, twelve male XLRs, twelve female XLRs, or twelve Neutrik Series "D" jacks.

APPLICATION

Prepunched single rack unit panels for common connectors.

FEATURES

- Available in four prepunched configurations:
 - sixteen 1/4" jacks (9005)
 - twelve male XLR jacks (9006)
 - twelve female XLR jacks (9007)
 - twelve Neutrik Series "D" jacks (9009)
- Heavy duty 16 ga. CRS.
- 0.50" flange on top and bottom for extra strength.
- Fit in a single rack space (1.75").
- Standard rack width (19").
- Professional black powder coat finish.

CODE	PREPUNCHED JACKS	HEIGHT	WIDTH	FLANGE DEPTH	WEIGHT (LBS)	FINISH	MATERIAL
9005 - 1	sixteen 1/4" jacks	1.75"	19.00"	0.50"	0.70	black powder coat	16 ga. CRS
9006 - 1	twelve male XLRs	1.75"	19.00"	0.50"	0.64	black powder coat	16 ga. CRS
9007 - 1	twelve female XLRs	1.75"	19.00"	0.50"	0.60	black powder coat	16 ga. CRS
9009 - 1	twelve Neutrik Series "D"	1.75"	19.00"	0.50"	0.60	black powder coat	16 ga. CRS



CABLE TIE DOWN BAR

Cable tie down bars help in organizing cables on multi - punched panels, make wiring easier and eliminate confusion. They make labeling simpler and easy to read.

APPLICATION

Mounts to the back of any prepunched panel by simply drilling two 5/32" holes, 16" apart.

FEATURES

- Helps to organize cables on multi - punched panels / make wiring easier.
- Made from 1/8" aluminum
- Clear aluminum finish.
- Prepunched 5/32 holes make mounting easy.
- Mounts directly to the back of any panel simply by drilling two 5/32 holes, 16" apart.

CODE	DESCRIPTION	HEIGHT	DEPTH	LENGTH	WEIGHT (LBS)	MATERIAL	FINISH
9136	cable tie down bar	3.00"	0.50"	17.0"	0.03	.125 aluminum	clear

MODULAR JACK PANEL

Modular panels offer an easy way to customize your own rack panels. The panels, which fit in two rack spaces, have 440 studs on the back to accept modular jack plates. The plates mount from the rear with nuts and are offered in a variety of prepunched configurations or blank for custom punching.

APPLICATION

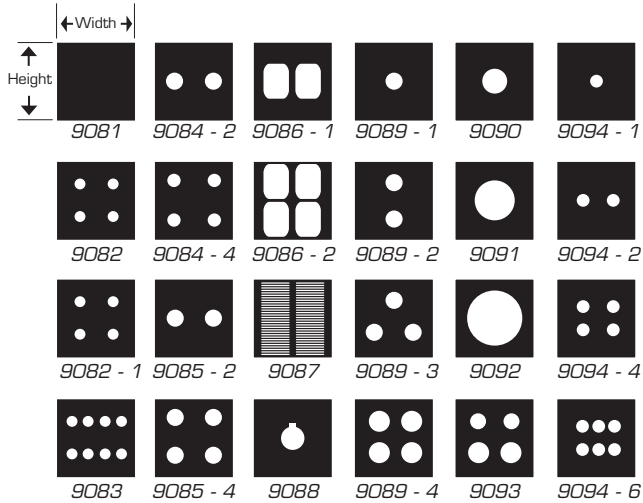
Custom panel fabrication.

FEATURES

- 16 ga. CRS with black baked textured enamel finish.
- Fits in two rack spaces.
- 1/2" flange on top and bottom for extra strength.
- Panel has 4 - 40 studs on back to accept modular plates (nuts are included).

CODE	RACK SPACES	HEIGHT	WIDTH	WEIGHT (LBS)	FINISH	MATERIAL
9080 - 2	2	3.5"	19"	.55	black baked textured enamel	16 ga. CRS





MODULAR JACK PLATES

The Modular Jack Plates rear - mount to the 9080 modular jack panel and are available in a variety of prepunched jack configurations or blank for custom punching.

APPLICATION

Custom panel fabrication.

FEATURES

- 16 ga. CRS with black baked textured enamel finish.
- Easily attach to 9080 modular panel.
- Available in many different jack configurations or blank aluminum for easy custom punching.
- Custom punching available on request.

PART NO.	HEIGHT	WIDTH	WEIGHT (LBS)	JACK CONFIGURATION	FINISH	MATERIAL
9081	3.20"	3"	.10	blank (none)	baked textured enamel	aluminum
9082	3.20"	3"	.14	four 1/4" phone	baked textured enamel	16 ga. CRS
9082 - 1	3.20"	3"	.13	four 7/16" shielded	baked textured enamel	16 ga. CRS
9083	3.20"	3"	.14	eight RCA	baked textured enamel	16 ga. CRS
9084 - 2	3.20"	3"	.13	two XLR male	baked textured enamel	16 ga. CRS
9084 - 4	3.20"	3"	.11	four XLR male	baked textured enamel	16 ga. CRS
9085 - 2	3.20"	3"	.12	two XLR female	baked textured enamel	16 ga. CRS
9085 - 4	3.20"	3"	.10	four XLR female	baked textured enamel	16 ga. CRS
9086 - 1	3.20"	3"	.10	one receptacle	baked textured enamel	16 ga. CRS
9086 - 2	3.20"	3"	.06	two receptacles	baked textured enamel	16 ga. CRS
9087	3.20"	3"	.09	vented plate	baked textured enamel	16 ga. CRS
9088	3.20"	3"	.12	one Cannon AP/EP	baked textured enamel	16 ga. CRS
9089 - 1	3.20"	3"	.13	one "D" connector	baked textured enamel	16 ga. CRS
9089 - 2	3.20"	3"	.12	two "D" connectors	baked textured enamel	16 ga. CRS
9089 - 3	3.20"	3"	.12	three "D" connectors	baked textured enamel	16 ga. CRS
9089 - 4	3.20"	3"	.11	four "D" connectors	baked textured enamel	16 ga. CRS
9090	3.20"	3"	.14	twist lock midget	baked textured enamel	16 ga. CRS
9091	3.20"	3"	.12	two - bolt twist lock	baked textured enamel	16 ga. CRS
9092	3.20"	3"	.10	three - bolt twist lock	baked textured enamel	16 ga. CRS
9093	3.20"	3"	.12	2 XLR male + 2 XLR fml	baked textured enamel	16 ga. CRS
9094 - 1	3.20"	3"	.15	one BNC connector	baked textured enamel	16 ga. CRS
9094 - 2	3.20"	3"	.14	two BNC connectors	baked textured enamel	16 ga. CRS
9094 - 4	3.20"	3"	.13	four BNC connectors	baked textured enamel	16 ga. CRS
9094 - 6	3.20"	3"	.12	six BNC connectors	baked textured enamel	16 ga. CRS

FAN PANELS

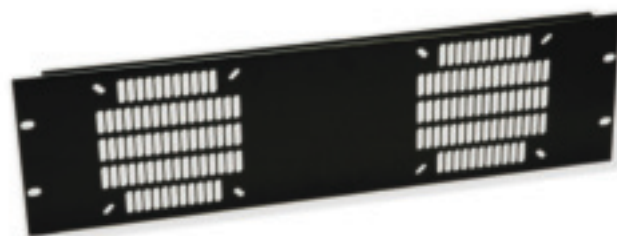
Fan panels fit in three rack spaces and are available to accommodate one, two or three fans. They feature a 1/2" flange for additional strength and are available in your choice of steel or aluminum.

APPLICATION

Mounting fans for cooling a rack.

FEATURES

- Available in 16 ga. CRS with black powder coat finish.
- Available to accommodate one, two or three fans.
- 1/2" flange on top and bottom for extra strength.
- Fits in three rack spaces (5.25").



CODE	TYPE	HEIGHT	WIDTH	WEIGHT (LBS)	FINISH	MATERIAL
9020 - 1	1 fan	5.25"	19"	2.00	black powder coat	16 ga. CRS
9020 - 2	2 fans	5.25"	19"	1.90	black powder coat	16 ga. CRS
9020 - 3	2 fans	5.25"	19"	1.80	black powder coat	16 ga. CRS

COOLING FAN

Cooling fans offer an ideal way to cool equipment racks. They feature: ball bearing construction, five blade design, low noise, and a high CFM rating.

APPLICATION

Cooling equipment racks.

FEATURES

- Ideal for cooling equipment racks.
- 95 CFM.
- 190 mA / 13 W / 15 V
- Ball bearing construction.
- Five blade design.
- Low noise.



CODE	DESCRIPTION	HEIGHT	WIDTH	DEPTH	WEIGHT (LBS)	CFM
9130	low - noise cooling fan	4.63"	4.63"	1.50"	1.21	95



WALL MOUNTED CABLE GROMMET



Dress up your cable wall entry with our 9160 series grommet plate.

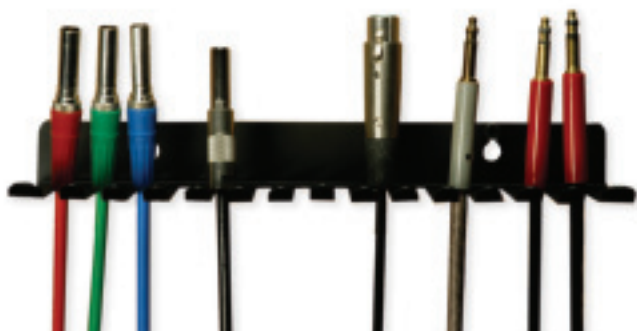
APPLICATION

Split plate captivates wall cables to organize and enhance wall cable entry.

FEATURES

- 18 ga. CRS black powder coat.
- 3 hole diameters to choose from 1", 2", 3".
- Plastic edging to protect cables.

CODE	DIMENSIONS	FINISH	MATERIAL	HOLE DIAMETER
9139 - 1	8" x 8"	18 ga. CRS	black powder coat	1.00"
9139 - 2	8" x 8"	18 ga. CRS	black powder coat	2.00"
9139 - 3	8" x 8"	18 ga. CRS	black powder coat	3.00"



PATCH CORD ORGANIZER

The organizer allows patch cords to be neatly stored for easy accessibility.

APPLICATION

This handy item holds a variety of audio, video and test patch cords. Pre punched for wall mounting on 16" centers, or standard 19" rack mounting.

FEATURES

- 16 ga. CRS black powder coat finish.
- Pre punched for wall and 19" rack mounting.
- Stores industry patch cords.

CODE	WIDTH	DEPTH	HEIGHT	MATERIAL	FINISH
9138	11.00"	3.375"	1.25"	16 ga. CRS	black powder coat



CASTERS

Castors are available in three different sizes to best suit your needs.

FEATURES

- 9200 - 25 - 2 1/2" swivel light duty.
- 9200 - 30 - 3" swivel medium duty.
- 9200 - 35 - 3 1/2" swivel heavy duty.

CODE	HEIGHT	WEIGHT CAPACITY
9200 - 25	3.25"	120 lbs.
9200 - 30	4.25"	210 lbs.
9200 - 35	4.625"	250 lbs.

PRETAPPED RACK RAIL

High quality steel rack rail is pretapped with 10 - 32 holes for mounting of equipment and prepunched for mounting rail to side of rack.

APPLICATION

Rack mounting of equipment.

FEATURES

- Constructed from heavy duty 12 ga. CRS.
- Full - hole spacing.
- Durable professional black E / coat finish.
- Pretapped with 10 - 32 holes for easy mounting of rack equipment and accessories.
- Conveniently punched for mounting rail to rack.
- Precut lengths available in sizes to fit 2 - spaces (9101 - 2 full - hole) to 44 - space (9101 - 44 full - hole)

CODE	TYPE	HEIGHT	WIDTH	DEPTH	WEIGHT (LBS)	MATERIAL	FINISH
9101 - 44	full - hole rail	73.5"	.70"	1.50"	4.3	12 ga. CRS	black e - coat



COMBINATION RAIL

Combination rail is ideal when extra strength is required to rack mount heavy equipment. For maximum strength, mount rails on the front and back of the rack and use 9103 Support Rail (below).

APPLICATION

Rack mounting of heavy equipment.

FEATURES

- Constructed from heavy duty 14 ga. CRS.
- Full - hole spacing.
- Durable professional black finish.
- Prepunched .280" holes on front & side provide for easy mounting using standard captive nuts.
- Conveniently spaced punched slotted holes for mounting rail to rack.
- Precut lengths available in sizes to fit 2 - space (9102 - 2) to 44 - space (9102 - 44)
- Captive nuts available 9120 in 100 - piece packages.

CODE	DESCRIPTION	HEIGHT	WIDTH	DEPTH	WEIGHT (LBS)	MATERIAL	FINISH
9102 - 44	combination rail (44 spaces)	77.0"	.69"	2.50"	5.0	14 ga. CRS	professional black finish





SUPPORT RAIL

The support rail mounts to 9102 combination rail and provides maximum support for heavy equipment.

APPLICATION

Ideal for power amps, VCRs and monitor installations.

FEATURES

- Provides support for heavy equipment.
- Made from heavy duty 14 ga. CRS.
- Conveniently spaced punched slotted holes for mounting to 9102 series combination rack rail.
- Durable professional black finish.

CODE	DESCRIPTION	HEIGHT	WIDTH	DEPTH	WEIGHT (LBS)	MATERIAL	FINISH
9103	support rail	1.75"	1.75"	24.0"	1.5	14 ga. CRS	black powder coat

RACK FASTENERS

Rack screws, captive nuts (for 9102 combination rack rail) and black plastic washers.

APPLICATION

All the necessary hardware to fasten equipment to rack rail.

FEATURES

- Screws available:
- 10 - 32 x 3/4" Phillips/Robertson combo head.
- 10 - 32 threaded captive nuts for 9102 combination rack rail.
- Black plastic washers.
- All hardware in 100 pcs. packages.

CODE	PACKAGE	DESCRIPTION
9112	pkg / 100	Phillips/Robertson combo screws
9120	pkg / 100	10 - 32 threaded 10 - 32 x 3/4 captive nuts for 9102 combination rail
9122	pkg / 100	black plastic rack washers





T: 905-751-0090 • TF: 877-834-3876
www.audiovideometals.com